



Fishermans Drive, London, SE16 6SG

A modern three double bedroom family home in quiet and green residential setting in ever so popular Canada Water. Recently renovated with bespoke features including consistent wooden flooring throughout, the property boasts a naturally bright open plan living space, a contemporary kitchen, a recently refurbished south west facing garden. On the first floor are the first two double bedrooms and the stylish family bathroom. On the top floor is a contemporary master bedroom ensuite with plenty of storage space. The house is located moments from the greenery of Stave Hill Ecological Park and Woodlands and within close walking distance to Canada Water Station and ever so popular Masterplan.

Freehold

£800,000

- Stunning Three Double Bedroom House
- Beautiful Open Plan Reception / Fitted Kitchen Diner
- Stylish Family Bathroom and En-Suite to Master Bedroom
- Recently Renovated With Bespoke Features
- South West Facing Garden
- Allocated Car Parking Space
- Surrounded by the Greenery of Stave Hill Ecological Park and Woodlands
- Moments from Canada Water Station

Alex & Matteo
ESTATE AGENTS

Fishermans Drive, London, SE16

Approximate Area = 939 sq ft / 87.2 sq m

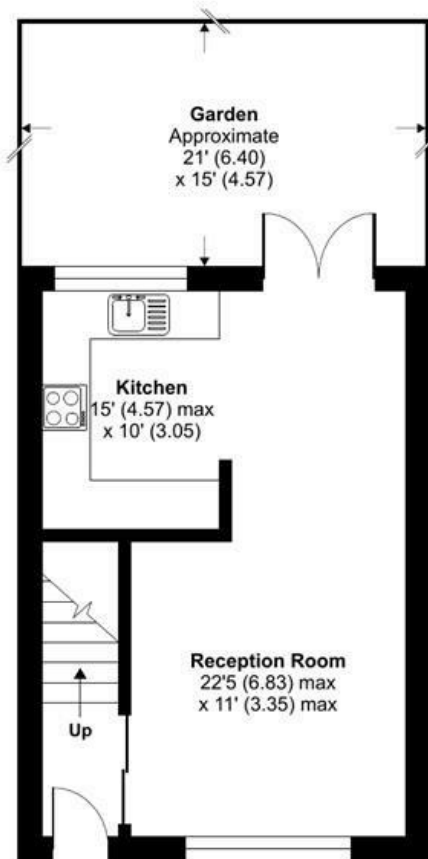
Limited Use Area(s) = 52 sq ft / 4.8 sq m

Total = 991 sq ft / 92 sq m

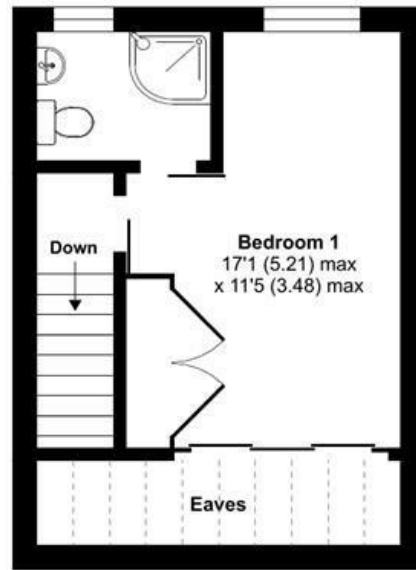
For identification only - Not to scale



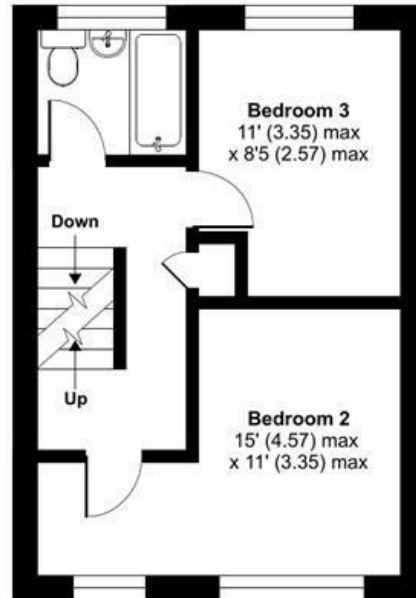
Denotes restricted head height



GROUND FLOOR



SECOND FLOOR



FIRST FLOOR



Floor plan produced in accordance with RICS Property Measurement Standards incorporating International Property Measurement Standards (IPMS2 Residential). © nitchcom 2023. Produced for Alex & Matteo Estate Agents. REF: 1001819

